

# SLUSH PUPPY MACHINE



## Operating Manual



### **SLUSH PUPPY OPERATING INSTRUCTIONS**

Thank you for renting our Slush Puppy machine from PartyZone.ie. Please follow the directions below for to make delicious slush puppy's for your event. If you have any questions or problems, please do not hesitate to contact us at 0852222000 or 0851568667.

## **PLEASE READ ALL INSTRUCTIONS BEFORE USE**



### **PRECAUTIONS**



Carefully read all instructions before operation.

Do NOT immerse any part of this equipment in water.

Keep cord and plug off the ground and away from moisture. Always unplug the equipment before cleaning.

To avoid burns, do NOT touch heated surfaces.

Do NOT place or leave objects in contact with heated surfaces.

Do NOT allow direct contact of this equipment by the public, this machine is NOT to be operated by anyone under the age of 18.

### **Electrical Specifications:**

**1000 Watts, 240V 50HZ., 13AMP Plug**

Make sure to plug in to a dedicated line with the specifications above and that no other appliances are on the same circuit.



#### **IMPORTANT**

Install the dispenser so that the plug is easily accessible.

### **4 TO OPERATE SAFELY**

---

- 1 Do not** operate the dispenser without reading this operator's manual.
- 2 Do not** operate the dispenser unless it is properly grounded.
- 3 Do not** use extension cords to connect the dispenser.
- 4 Do not** operate the dispenser unless all panels are restrained with screws.
- 5 Do not** obstruct air intake and discharge openings: 15 cm (6") minimum air space all around the dispenser.
- 6 Do not** put objects or fingers in panels louvers and faucet outlet.
- 7 Do not** remove bowls, augers and panels for cleaning or routine maintenance unless the dispenser is disconnected from its power source.

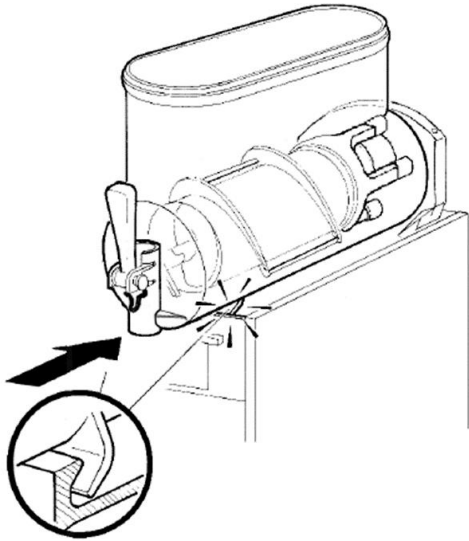
## **SET UP**

Place the rented Slush Puppy machine on a stable, level surface, such as a table or counter. Please keep the machine upright at all times. To create a more attractive setting, rent a cart, stand or cabinet specially designed for the Slush Puppy machine.

Make sure to set up the rented slush puppy machine near a grounded, electrical source, so that you will not need to use an extension cord, unless approved by the manufacturer of the rented machine.

Inspect the slush puppy machine to ensure all parts are in place and that it is not in the transportation mode

## SET UP/OPERATING INSTRUCTIONS



FIRST it is important to ensure that the machines bowl is correctly positioned and that there will be no leaks present in the machine when concentrate is poured in.

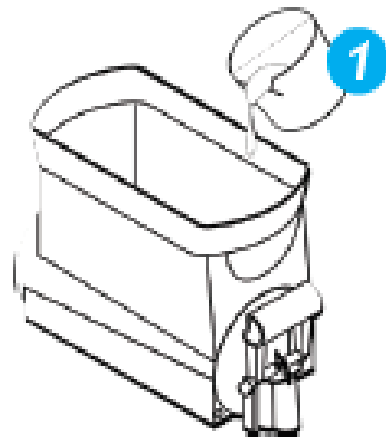
Do this by checking the Clips are secured behind the grey mount clips as seen in picture here, ensure the tank is pushed back all the way and clipped securely and tightly at the back.

Check to make sure both drink compartments are tightly sealed against the back of the machine. If they are loose, push back on the plastic and slightly down to lock then into the base. If this is not seated correctly this could result in machine leaking and staining

Once this is confirmed you may proceed to add the concentrate to the tank/bowl by removing the top lid and pouring in slowly (ensure machine is still switched off)

When filling the drink compartments, be sure to fill to at least the minimum fill line (which can be seen near bottom) and that it covered the stainless-steel freezing element .and do not go over the maximum fill line (which can be seen near the top).

All slushy mix must be purchased through PartyZone and no other concentrate should be used.



**DO NOT ADD ALCOHOL TO THE MACHINE.**

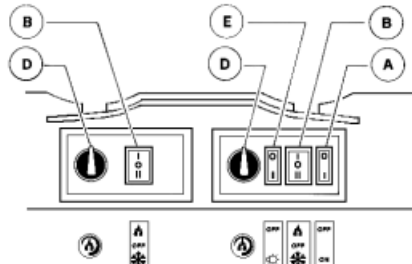
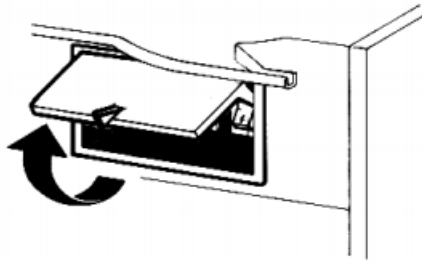
This will stop the slushy mix from freezing properly. Always put liquor in the cup first or after, and then add the ready slushy mix on top/bottom.

Freeze time is approximately 40mins-1 Hour based on located environment.

When necessary and machine needs to be topped up Once you have mixed the syrup and water, fill both drink compartments. Put the lids back on the top.

**NOTE: STRICTLY DO NOT ADD WATER TO THE MIXTURE AT ANY POINT WHEN IN USE, AS THIS WILL DAMAGE THE MACHINE**

## OPERATING INSTRUCTIONS



### **Power switch (A)**

- 0 position : power is turned OFF to all functions.
- I position : power is turned ON to all functions and the other switches are enabled. The fan motor runs.

### **Light switch (E)**

- 0 position : all top cover lights are OFF.
- I position : all top cover lights are ON, provided that power switch (A) is set to I.

### **Mixer/refrigeration switch (B)**

- I position : mixer and refrigeration ON. SOFT DRINK mode.
- 0 position : OFF.
- II position : mixer and refrigeration ON. GRANITA mode.

### **Thermostat (D)**

- Turn clockwise : to decrease temperature
- Turn counterclockwise : to increase temperature

To operate the unit:

- 1 Set the power switch to I position.
- 2 Set the mixer/refrigeration switches as follows:
  - to the I position to get soft drink.
  - to the II position to get Granita.
- 3 Set the light switch to I position.

Underneath of the Tanks on the machine is the above control switches which control the machine.

See above drawing off all functions of these buttons.

The main ON/OFF button is under the right panel of the machine and is Marked **A(I/O)** – this turns on power to the machine

The Panels “left” and “right” Control the left and right drink compartments.


When you have topped up the machine and are ready to freeze, flip switch **A** to “**I/ON**”

Then there is a 3 way switch (**B**) that operates the cooling and freezing of each side top is Raindrop Icon (**I**)

(top) and the second function (middle) is **OFF (O)** and the third is the snowflake icon (**II**) ❄️ (bottom)

💧 Raindrop – Cooling /Chill

(O) = OFF

 = Freeze (until reach slushed)

Press the button to Snowflake icon **(II)** and rotors will begin to spin and tank begin to freeze

There is also a Thermostat dial switch on the machine Marked **(D)** this is to regulate the temperature of the machine so if slush is too ICEY turn to the Left and if slush is too watery turn the dial to the Right.

The machine (based on fill line & environment it's situated in) should take approx. 40-60mins to freeze.

Once slush puppy is at correct slush level and ready to serve **PLEASE ENSURE TO TURN THE SWITCH TO THE RAINDROP ICON(I) SO THE MACHINE DOES NOT OVER FREEZE**, Once ready serve from pulling the handle down **gently** to disperse frozen slush puppy. If you find the slush is starting to go watery you can turn back to the **(II)** Freeze Symbol until hardened again and repeat above

**NOTE: IF ANY OF THE TANKS BECOME EMPTY PLEASE TURN THE CORRESPONDING SIDE SWITCH TO MIDDLE FUNCTION BUTTON (O) OFF FAILURE TO DO SO WILL RESULT IN MACHINE BEEN DAMAGED**

**NEVER ADD WATER TO ANY OF THE TANKS UNLESS INSTRUCTED TO DO SO BY PARTYZONE**

If you are planning on using the machine the next day - leave the machine on but flip the second switches up to the raindrop icon. This will keep the liquid turning, but will shut the freeze off, which is **very important** OR YOU CAN SIMPLY TURN THE MACHINE OFF.

**FAILURE TO DO THIS MAY CAUSE DAMAGE TO THE COMPRESSOR, THE ROTOR OR BOTH. BOTH ITEMS ARE VERY EXPENSIVE AND WILL INCUR A REPLACEMENT FEE FROM HIRER**

If you are NOT planning on using the machine the next day – turn the machine off at the end of the event and un-plug it. If the freeze is left on by mistake the liquid will freeze, expand and crack the rotor. Each rotor costs €175 to replace

## **NOTES**

Any other queries please do not hesitate to contact  
085-2222000 or 085 1020175

## CLEANING

Machine must be drained after each use. After draining machine fill with 1gallon luke warm water and turn on for 3 mins. Then drain this water and follow disassemble and cleaning instructions below:

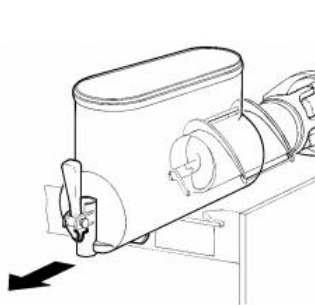


figure 6

- 3 Slide the outer spiral out (see figure 7) and the auger (see figure 8).

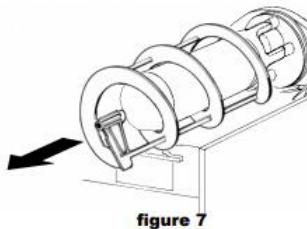


figure 7

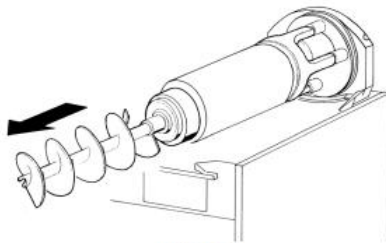


figure 8



### ATTENTION

Before any disassembly and/or cleaning procedure make sure that the dispenser is disconnected from its power source by unplugging it or switching off the 2-pole wall breaker.

- 1 Remove cover from the bowl.
- 2 Remove the bowl by lifting its faucet side up and off the fastening hooks (see figure 5) and slide it out (see figure 6).

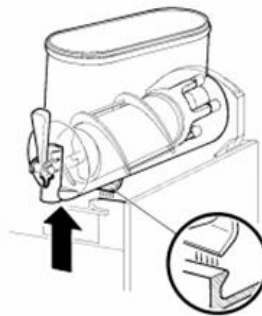


figure 5

Once machine has been emptied please follow the below disassembly instructions to carefully thoroughly clean the machine down.

Place all parts in a clean sink with mild hot water .

Carefully wash all components with a clean wash cloth in the hot water. Use a clean, soft bristle brush as needed for the smaller components and tight

areas.

Remove the drip tray and cover. Wash the drum(s), hopper drip tray(s), top cover(s), and outer enclosure using a clean wash cloth that has been dampened in the hot water.

Pay particular attention to the shaft area and make sure it is thoroughly cleaned and no remaining product colouring can be seen.

Thoroughly rinse all surfaces with a clean wash cloth that has been dampened with hot water. Wipe dry with a clean dry wash cloth before reassembling the dispenser.

**There is an additional €20 cleaning charge for machines that have not been wiped down or emptied.**

See Below Links on how to operate and Clean machines

<https://www.youtube.com/watch?v=AxUPPrKbAyM>

<https://youtu.be/n13zA48krtU>



# Slush machine operation manual



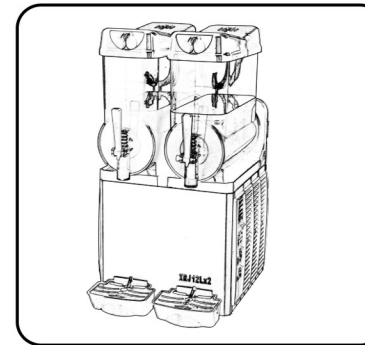




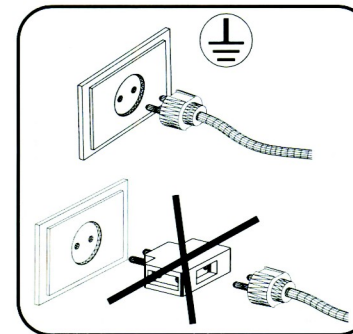
Before using the machine please read this manual carefully. Please note that non-compliance to the manual releases the manufacturer from any responsibility. The machine must not be used for purposes other than the ones shown in this manual. Any improper use of the machine will nullify warranty conditions. The Mod. machine should not be placed close to explosive or fire hazards and should be installed in accordance with local fire and electrical codes.

#### Trouble shooting

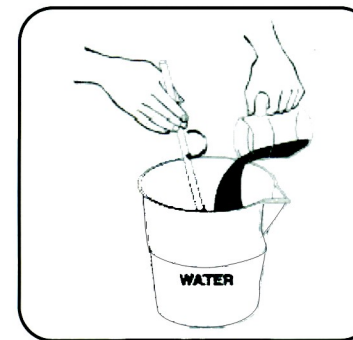
- Power failure: -Check power supply & plug.
- Check switches are on.
- Product not freezing: -Check if condenser is clean.
- Check closeness to other machines.
- Check closeness to wall. air flow should not be blocked.
- Auger not moving or making noise: -Incorrect sugar content minimum.



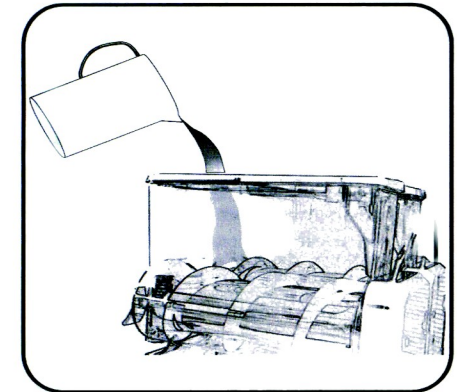
Place machine on a flat surface. Leave at least 25cm on all sides for air circulation to avoid overheating. Optimum room temperature range: 25°C-32°C.



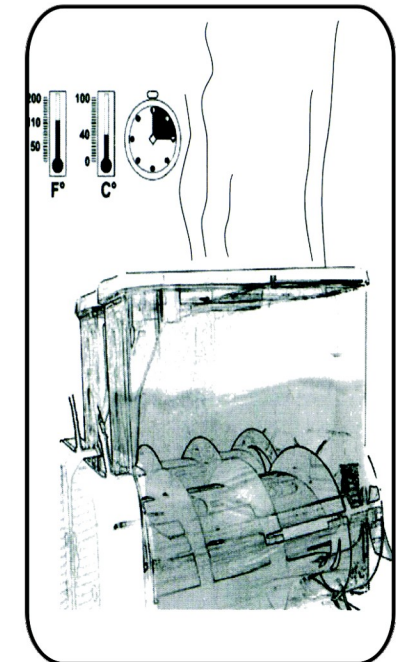
Pay attention to the voltage. Be sure there is a ground pole. Do not plug more than one machine in to one socket. Extension cords not recommended.



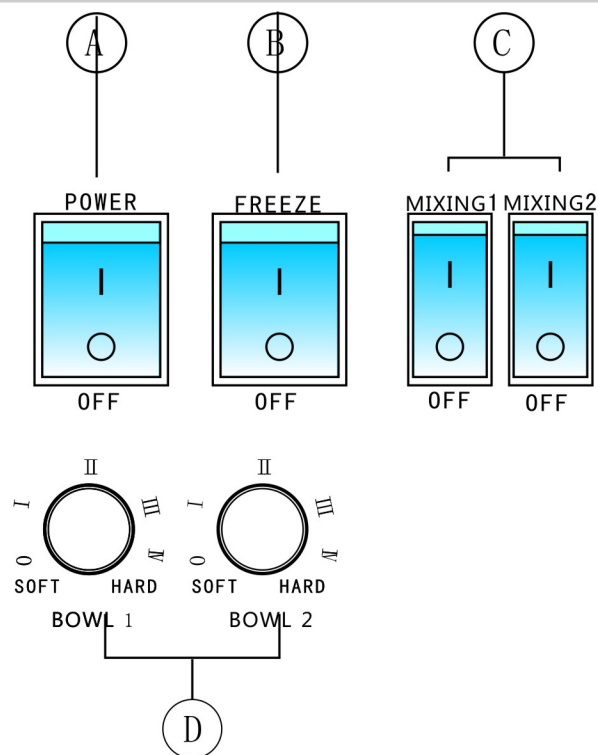
Mix product in a separate container if your product is a liquid concentrate, or powder, to be mixed with water, do not dilute more. There must be at least 13% sugar content to avoid breakage of ice scraper blade.



Never turn machine on without product in bowl or with only water in bowl. Pour product into bowl to "max" line [never add a hot product]. Do not let product go below "min" line [keep at least 1" above cylinder at all times]. Refill with refrigerated product when level is halfway between min and max levels. This way there will always be frozen product available for customers.



To empty bowl: turn power off. Drain product. Fill bowl with tepid water. Let stand 15 minutes.



- A) Main power switch
- B) Main cooling switch (compressor)
- C) Mix switch
- D) Slush thickness adjust/independent bowl cooling switch

#### How to make slush:

Power on (A), main cooling switch on (B) and mixing switch on (C), place both knob 1 & 2 (D) at level 1-4.

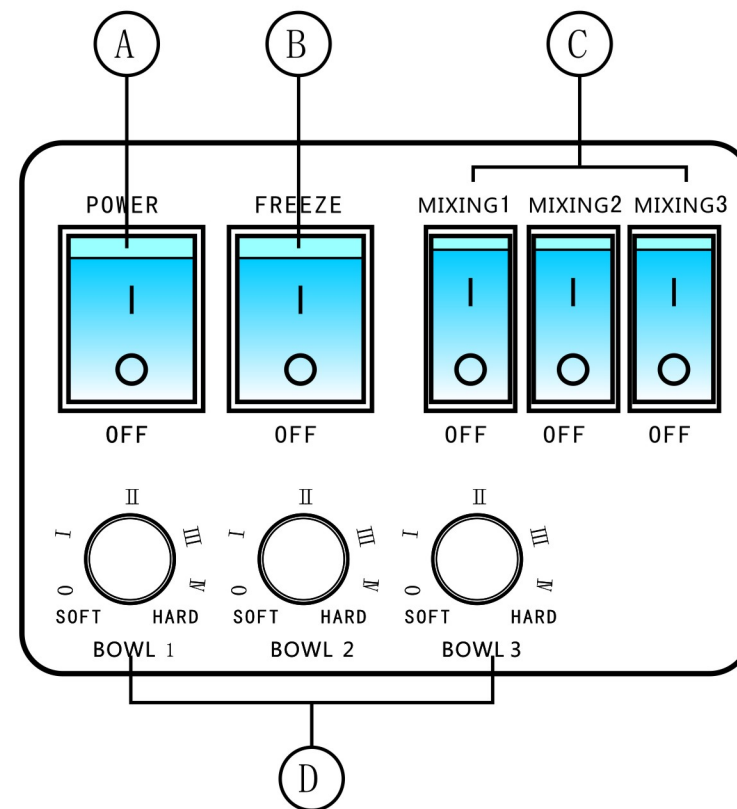
D is the key to adjust the slush hardness, level 1 is the softest, level 4 is the hardest.

Place knob 1 at "0" means bowl 1 stop making freeze.

Place knob 2 at "0" means bowl 2 stop making freeze.

In case ice block, off the main cooling switch first, and then off the mixing switch.

Waiting 15-20 minutes to let the ice block become liquid, and then turn on the machine again.



- A) Main power switch
- B) Main cooling switch (compressor)
- C) Mix switch
- D) Slush thickness adjust/independent bowl cooling switch

## **China Slush Machine Troubleshooting**

### **A. Single tank not working and make Cooling**

1. Check the voltage of the machine, Normally the voltage  $110V \pm 10\%$  will be okay, each motor current will have difference, check from the side panel holes, for 15L\*2 Model, there are 3 lights, one green and 2 red light (one red light for one tank), for 15L\*3 tanks Model, there are 4 lights, one green and 3 red lights. If the lights have problem, we can reset the machine. 2. If after reset several times, still have lights problem, then we can check if the switch problem, and change the switch for the control panel. 3. Check if the compressor working condition, if compressor working normal, the condenser fan will give hot air, and Check the current of the compressor, to Check the compressor wire and compressor protector.

4. To Check if lack of Refrigerant.

### **B. Whole machine not make Cooling**

1. Check the voltage of the machine, Normally the voltage  $110V \pm 10\%$  will be okay, each motor current will have difference, check from the side panel holes, for 15L\*2 Model, there are 3 lights, one green and 2 red light (one red light for one tank), for 15L\*3 tanks Model, there are 4 lights, one green and 3 red lights. If the lights have problem, we can reset the machine. 2. If after reset several times, still have lights problem, then we can check if the switch problem, and change the switch for the control panel. 3. Check if the compressor working condition, if compressor working normal, the condenser fan will give hot air, and Check the current of the compressor, to Check the compressor wire and compressor protector. 4. To Check if lack of Refrigerant.

### **C. The motor not running problem**

1. Open the side panel and Check the wire connect the motor and switch if loose or connect well
2. Open the back side panel to Check if the motor install well or not
3. Take out the motor and connect the wire to Check if the motor can running.

### **D. The machine can not turn on ( no electric power)**

1. Check the main electric wire condition, if connect loose or broken. 2. Use the multimeter to Check the main power switch to compressor and motor, to Check if the parts with electric or not